

Pend Oreille County Visioning Comprehensive Plan 2020 Update



©2007 Washington State Department of Ecology



WHITE BLUFFS
CONSULTING

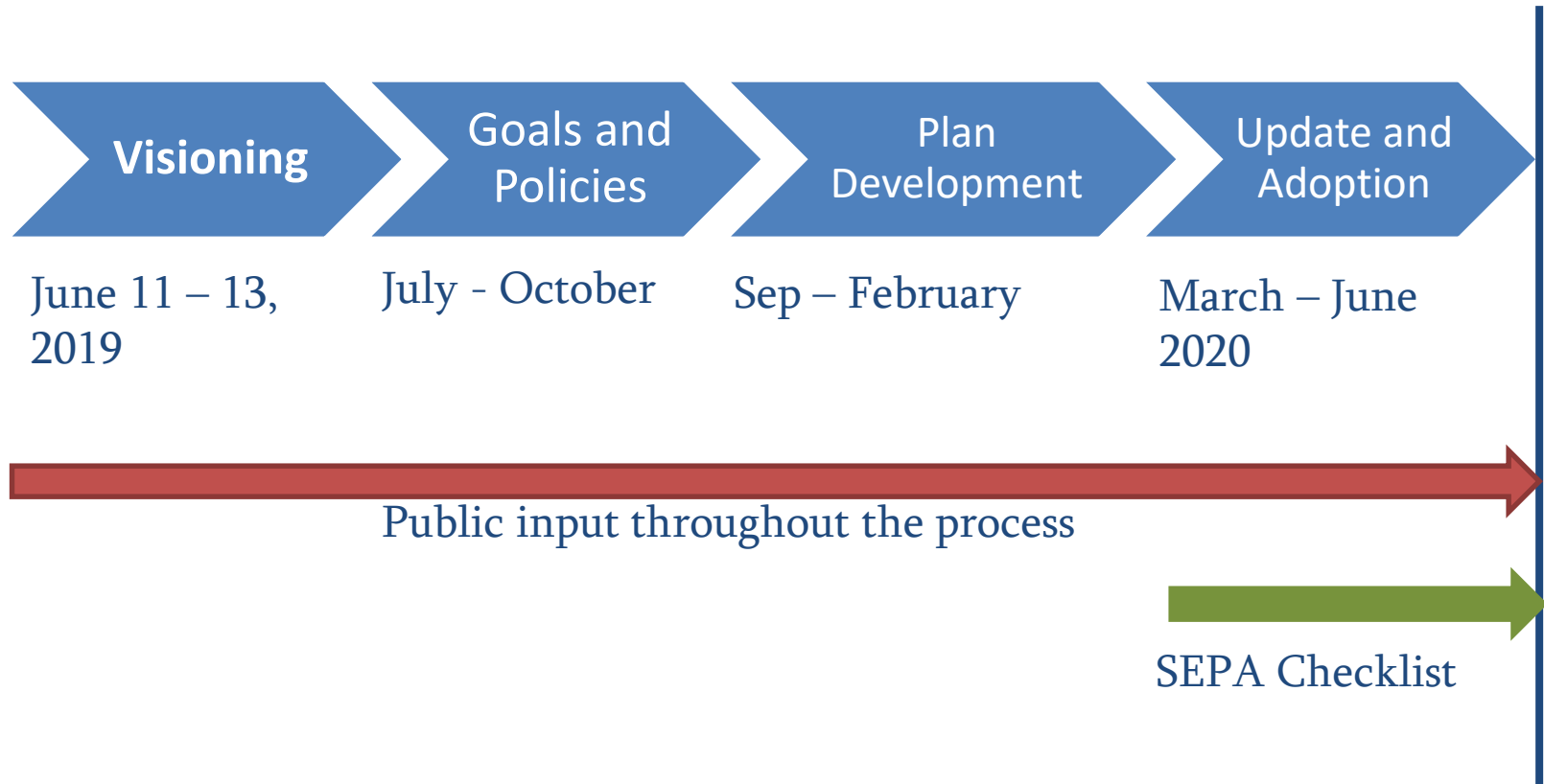


Visioning Meeting Agenda

■ Overview

- Introductions
- Growth Management Act (GMA) and Comprehensive Plan Update
- Population Projections
- Future Land Use and Goals
- Visioning
- Next steps

Timeline



Growth Management Act (GMA)



WHITE BLUFFS
CONSULTING



What is the GMA?

- RCW 36.70A / WAC 365-196
- Mandatory elements, but plan on local conditions
- Framework to plan for 10 to 20 year growth
- Update due June 2020

Growth Management Act

14 Planning Goals:

- Urban Growth
- Reduce Sprawl
- Transportation
- Housing
- Economic Development
- Property Rights
- Permits
- Natural Resource Industries
- Open Space and Recreation
- Environment
- Citizen Participation
- Public Facilities and Services
- Historic Preservation
- Shoreline Master Program



Comprehensive Plan



WHITE BLUFFS
CONSULTING



What is a Comprehensive Plan?

- A plan guiding long term decisions for the County
- Reflects County visioning ideas
- Goals and policy framework
- Complies with the state laws (Growth Management Act)

Why We Plan

- To reflect community values and vision for the future
- To accommodate future growth
- To determine where new housing, shopping, jobs and infrastructure will be located over the next 10 to 20 years
- To identify how to deliver services compatible with growth



Plan Relationship with Other Documents

Growth Management Act

RCW 36.70A, 36.70B; WAC 365-195 to 199

Comprehensive Plan

Vision, goals and policies, analysis, environmental review

Development Regulations

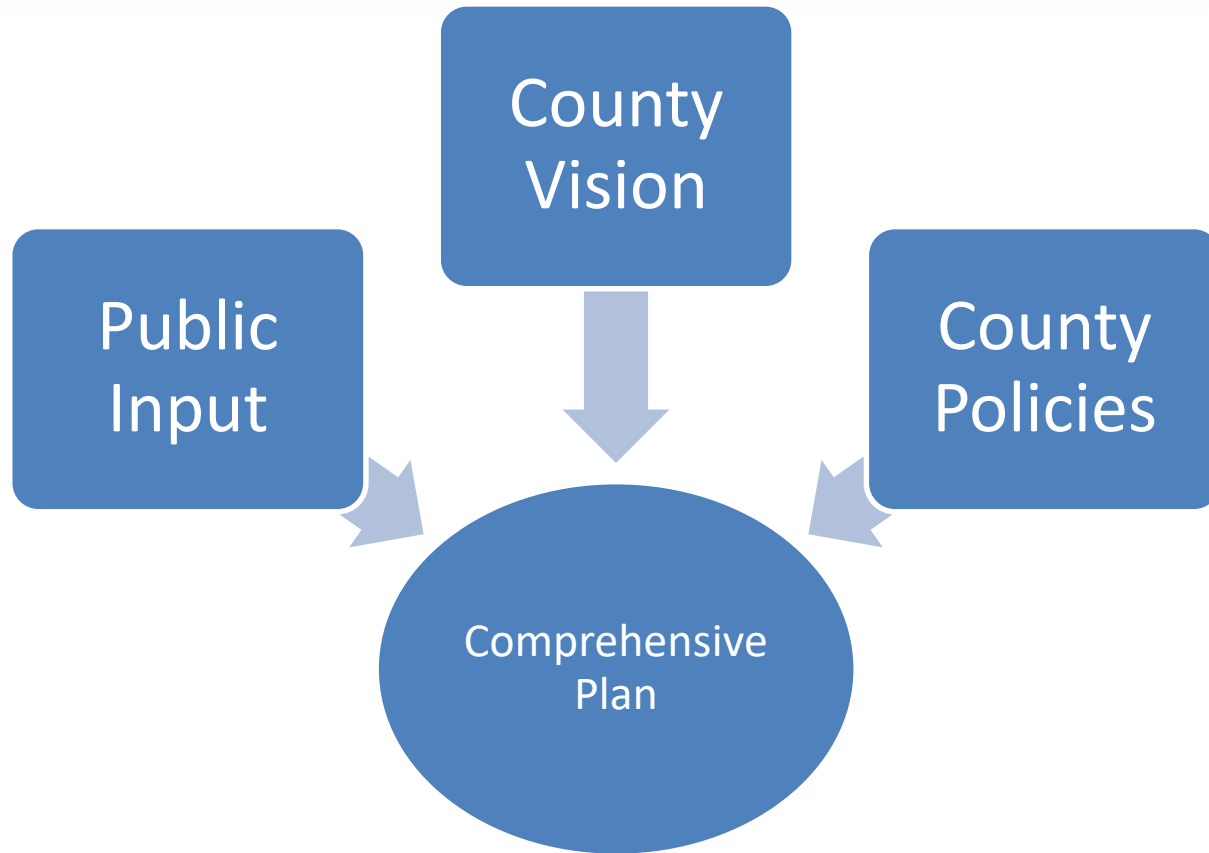
Municipal codes

Implementation

Permits, action plans, budget, CIP, administrative provisions



Plan Relationship with Other Documents



Current Comprehensive Plan Elements

■ Land Use

- Goals and Policies
- Existing Conditions
- Future Uses
- Critical Areas

■ Economic Development

- Goals and Policies
- Existing Conditions

■ Transportation

- Goals and Policies
- Existing Conditions
- Level of Service

■ Housing

- Goals and Policies
- Existing Conditions



Current Comprehensive Plan Elements

■ Parks and Recreation

- Goals and Policies
- Existing Conditions

■ Utilities

- Goals and Policies
- Existing Conditions

■ Essential Public Facilities

- Goals and Policies
- Existing Conditions

■ Capital Facilities

- Goals and Policies
- Existing Conditions
- 6 Year CIP



Potential New Comprehensive Plan Elements/Sections

■ Environment

- Critical Areas (including updated CA regulations)
- Voluntary Stewardship Program
- Shoreline Master Program

■ Natural Resources

- Water Resources – addressing exempt wells with WRIA-specific strategies
- Resource Lands

■ Land Use

- Update population forecast/designations

■ Economic Development

- Work with EDC on updates
- Add in strategies

■ Transportation

- WSDOT Coordination/State Facilities Addressed

■ Capital Facilities

- 6 Year CIP for all public entities: PUD, schools, etc.



Draft Population Projections



WHITE BLUFFS
CONSULTING



Recent Population Growth

Table 2.2 Population Data-Pend Oreille County

Municipality	2000 Population	2010 Population ¹	% Change 2000-2010	2017 Population Estimate ²	% Change 2010-2017
Pend Oreille County Total	11,732	13,001	10.8%	13,370	2.8%
Unincorporated	8,735	9,810	12%	10,140	3.4%
Incorporated Cities	2,997	3,191	6%	3,230	1.2%
Cusick	212	207	-2%	205	-1.0%
Ione	479	447	-7%	445	-0.4%
Metaline	162	173	7%	170	-1.7%
Metaline Falls	210	223	6%	240	7.6%
Newport	1,691	1,921	13.6%	2,170	13.0%

Source: ¹Census 2000; ²Office of Financial Management, April 1, 2017 Population Estimate.

High, Medium, Low Projections

Table 2.3 Population Projections-Pend Oreille County

Population Projections	2018 Projected Population ¹	2019 Projected Population	2039 Projected Population ¹
Low	13,115	12,860	12,302
Medium	13,565	13,746	14,641
High	14,023	14,677	18,647

¹ Source: Office of Financial Management Population Projections, 2017. (Note: These population projections were developed in 2017. As shown, the 2018 low population projection for Pend Oreille County is lower than the actual population of 13,540 persons in 20).

Preliminary Draft Population Growth Projection

Table 2.4 Population in Pend Oreille Urban Areas

Municipality	2010 Population	2018 Population	% Change 2010- 2018	% of 2018 Total Population	Projected Population 2029¹	Projected Population 2039²	% of the Total Projected Population
Unincorporated County	9,810	10,310	5.1	76.00%	11,184	11,307	77.23
Cusick	207	205	-1	1.51	202	200	1.37
Ione	447	445	0.4	3.28	442	440	3.00
Metaline	173	170	-1.7	1.25	166	162	1.11
Metaline Falls	238	240	0.8	1.77	243	245	1.68
Newport	2,126	2,170	2.1	16	2,213	2,287	15.62
Total	13,001	13,565	4.34	100%	14,469	14,641	100

¹Projected Population is derived from OFM 2017 estimates and each municipality's historic growth.

Future Land Use, Goals and Visioning



WHITE BLUFFS
CONSULTING



Future Land Use



WHITE BLUFFS
CONSULTING



What is a Vision

- What community members most value about the county
 - Shared image of what the county will become in the next 20 years
- Goals and policies are based on vision ideas

Land Use Goals

- Land Use Goal # 1: Support new growth and development that is consistent with the demands of County residents and that supports future growth and economic vitality while maintaining the rural character of Pend Oreille County.

Land Use Goals

- Land Use Goal # 2: Maintain the rural character of Pend Oreille County, including: forest lands, agricultural lands, mining and natural resource-based industries, home-based businesses, and recreational properties.

Land Use Goals

- Land Use Goal # 3: Protect the traditional rural ways of making a living farming and ranching, timber harvesting, and mining-from conflict with rural residential development.

Land Use Goals

- Land Use Goal # 4: Encourage urban type development to be concentrated in urban growth areas or more densely populated areas where existing facilities either have adequate capacity or where appropriate levels of service can reasonably be provided.

Land Use Goals

- Land Use Goal #5: Retain sufficient flexibility in plans and regulations in order to support a wide range of economic development opportunities throughout the County.

Land Use Goals

- Land Use Goal #6: Support new development that is consistent with a realistic assessment of the availability of water and that does not adversely affect the rights of existing water users.

Land Use Goals

- Land Use Goal #7: Establish and maintain regulations that are consistent with the Statement of Values and General Planning Principals, that respect private property rights and that do not unduly affect the private use and enjoyment of one's property.

Land Use Goals

- Land Use Goal #8: Protect environmentally sensitive areas, including critical areas, to maintain ecological functions and values, and reduce cumulative adverse environmental impacts.

Land Use Goals

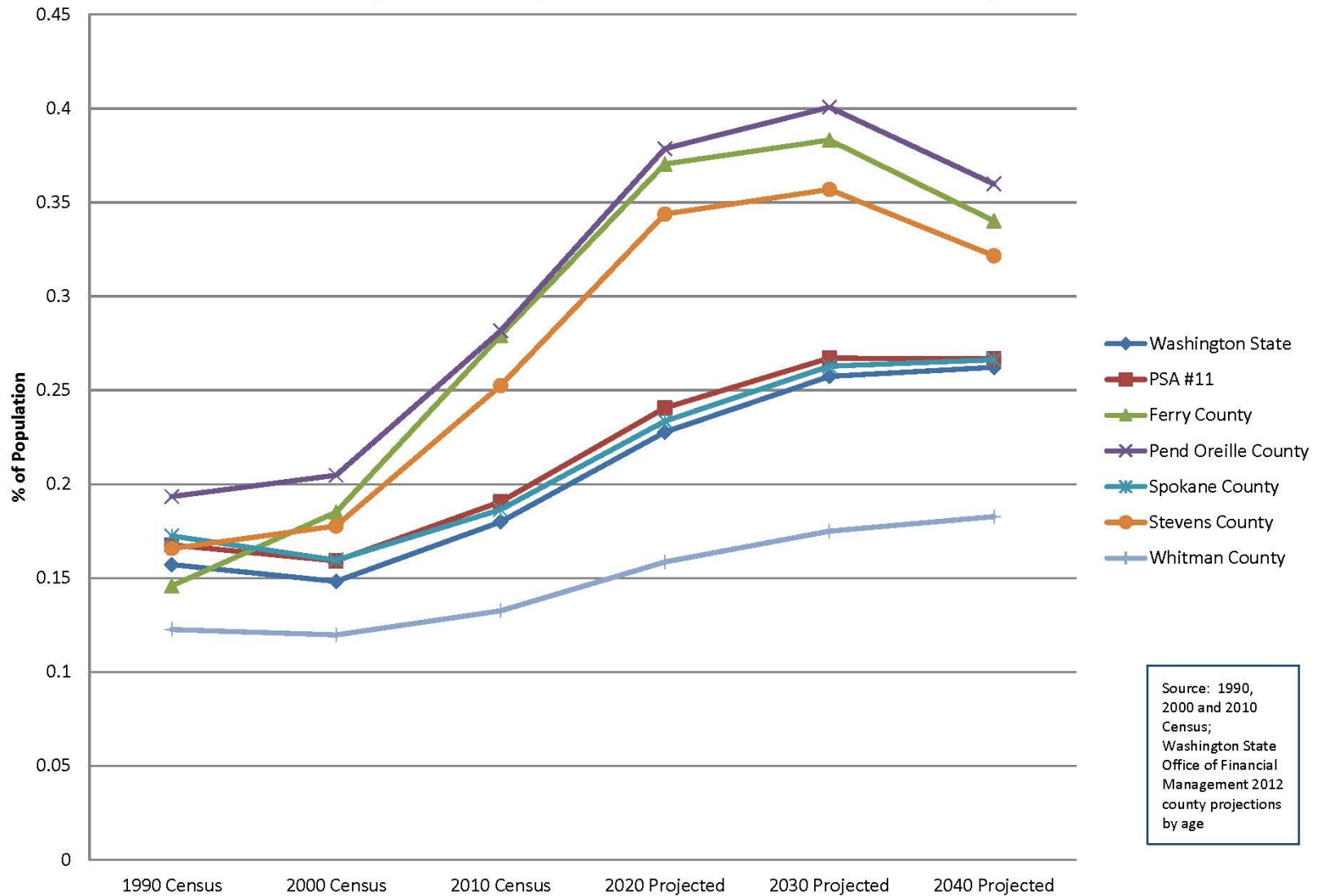
- Land Use Goal #9: Protect groundwater recharge areas, and prevent the contamination of vulnerable groundwater resources to ensure water quality and quantity for public and private uses and critical area function.

Public Input

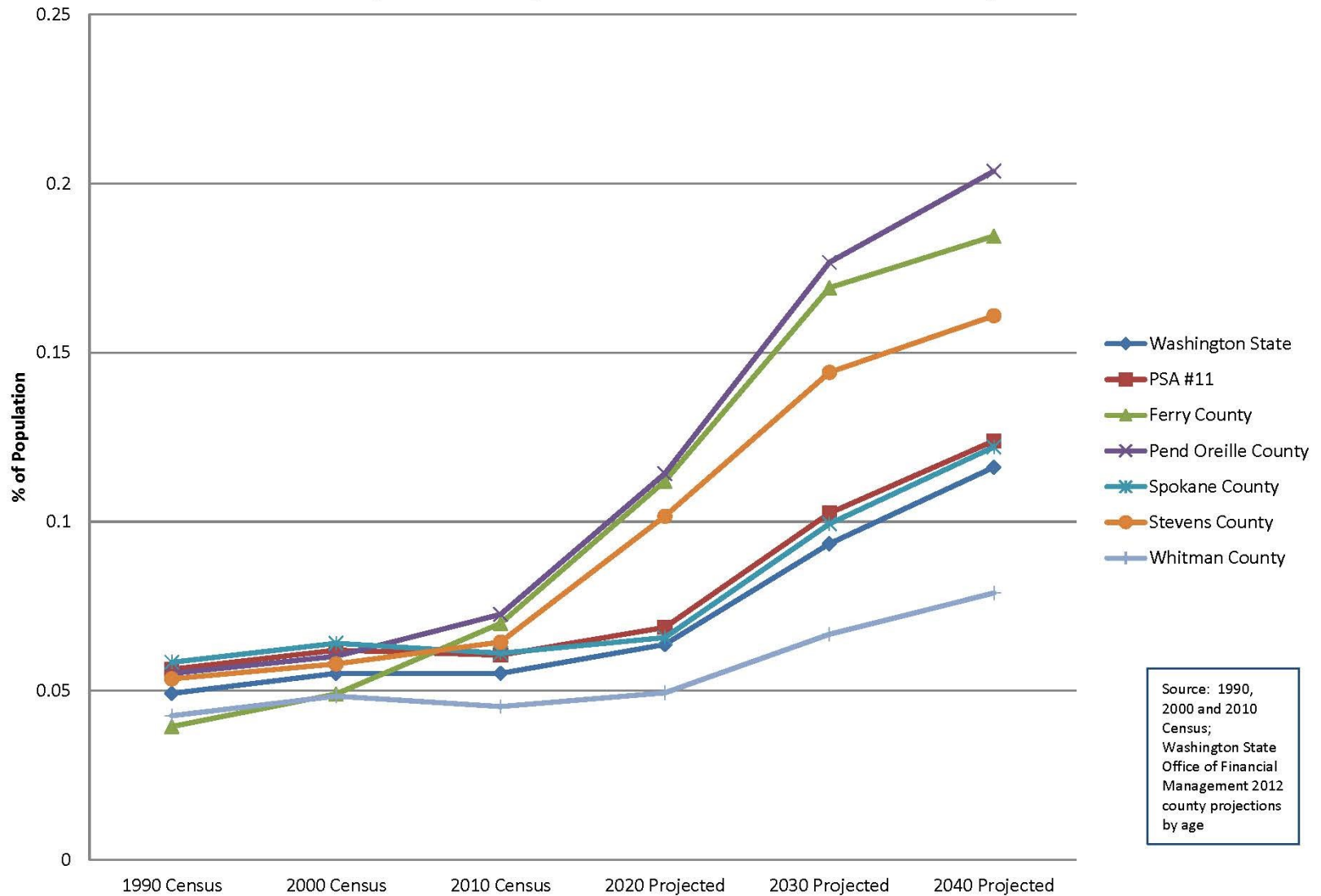
- What changes are happening in the County? Trends?
- What should the future direction look like?
- What future uses would you like to see?
- What should the County look like in 20 years?



Percent of Population Age 60 and Older, Actual and Projected



Percent of Population Age 75 and Older, Actual and Projected



Next Steps



WHITE BLUFFS
CONSULTING



Next Steps

Tasks	2019									2020					
	May	June	July	Aug	Sept	Oct	Nov	Dec	Jan	Feb	Mar	Apr	May	June	
Develop County Public Participation Plan															
Visioning Meetings															
Update Countywide Planning Policies															
County Population Projection and Allocation															
Resource Lands Review and Designations Update															
Review and Update Plan Elements															
Land Use		PC		PC											
Economic Development				PC											
Parks and Recreation				PC		PC									
Housing						PC									
Transportation						PC		PC		PC					
Utilities								PC							
Essential Public Facilities								PC		PC					
Characterize Water Resources and Water Supply Availability								PC		PC					
Capital Facilities Planning						PC		PC							
SMP, CAO and VSP Updates						PC		PC							
SEPA/Environmental Review											60-day review				
Comprehensive Plan Adoption													PC	BOCC	
County and Planning Commission Meetings										*					

*Planning Commission hearing target month



WHITE BLUFFS
CONSULTING



Additional Questions/Comments?



WHITE BLUFFS
CONSULTING