

Pend Oreille County Comprehensive Plan 2020 Update



WHITE BLUFFS
CONSULTING



Agenda

■ Overview

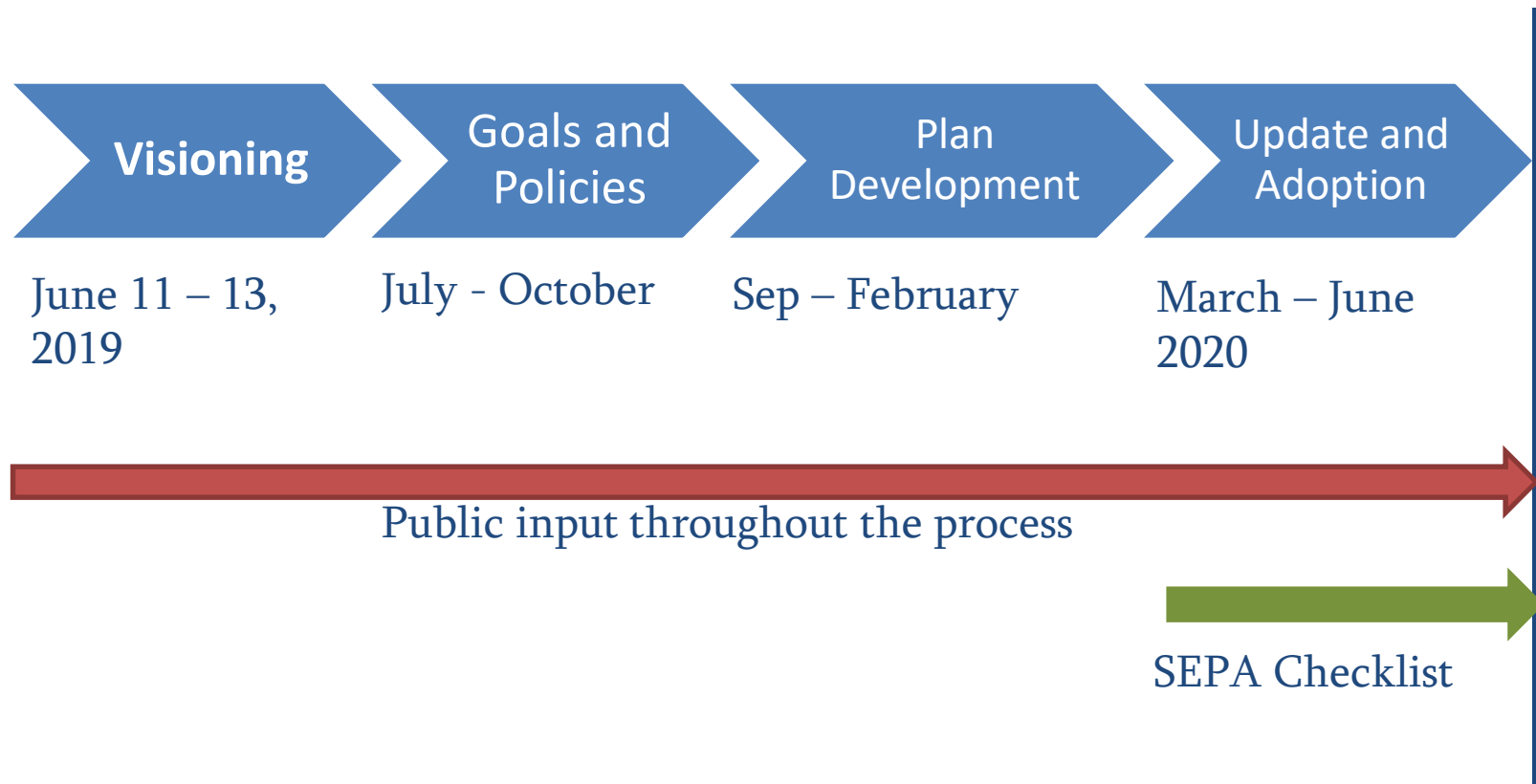
- Introductions/Consultant Team Overview
- Timeline and Process
- Growth Management Act (GMA) and Comprehensive Plan Update
- Coordination Activities
- Receive PC Input/Address PC questions
- Next steps



WHITE BLUFFS
CONSULTING



Timeline



WHITE BLUFFS
CONSULTING



Growth Management Act (GMA)



WHITE BLUFFS
CONSULTING



What is the GMA?

- RCW 36.70A / WAC 365-196
- Mandatory elements, but plan on local conditions
- Framework to plan for 10 to 20 year growth
- Update due June 2020



WHITE BLUFFS
CONSULTING



Growth Management Act

14 Planning Goals:

- Urban Growth
- Reduce Sprawl
- Transportation
- Housing
- Economic Development
- Property Rights
- Permits
- Natural Resource Industries
- Open Space and Recreation
- Environment
- Citizen Participation
- Public Facilities and Services
- Historic Preservation
- Shoreline Master Program



WHITE BLUFFS
CONSULTING



Comprehensive Plan



WHITE BLUFFS
CONSULTING



What is a Comprehensive Plan?

- A plan guiding long term decisions for the County
- Reflects County visioning ideas
- Goals and policy framework
- Complies with the state laws (Growth Management Act)



WHITE BLUFFS
CONSULTING



Why We Plan

- To reflect community values and vision for the future
- To accommodate future growth
- To determine where new housing, shopping, jobs and infrastructure will be located over the next 10 to 20 years
- To identify how to deliver services compatible with growth



WHITE BLUFFS
CONSULTING



Plan Relationship with Other Documents

Growth Management Act

RCW 36.70A, 36.70B; WAC 365-195 to 199



Comprehensive Plan

Vision, goals and policies, analysis, environmental review



Development Regulations

Municipal codes



Implementation

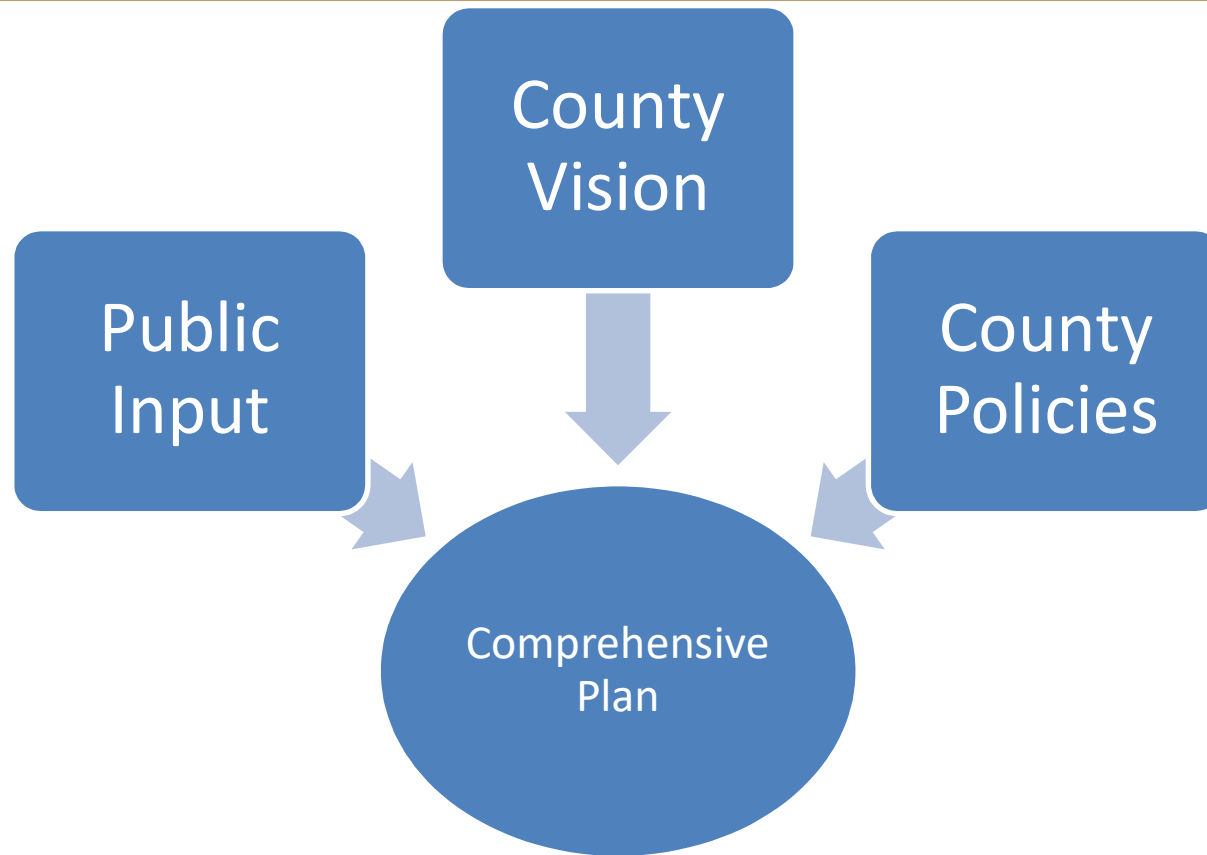
Permits, action plans, budget, CIP, administrative provisions



WHITE BLUFFS
CONSULTING



Plan Relationship with Other Documents



WHITE BLUFFS
CONSULTING



Current Comprehensive Plan Elements

- **Land Use**
 - Goals and Policies
 - Existing Conditions
 - Future Uses
 - Critical Areas
- **Economic Development**
 - Goals and Policies
 - Existing Conditions
- **Transportation**
 - Goals and Policies
 - Existing Conditions
 - Level of Service
- **Housing**
 - Goals and Policies
 - Existing Conditions



WHITE BLUFFS
CONSULTING



Current Comprehensive Plan Elements

- **Parks and Recreation**

- Goals and Policies
- Existing Conditions

- **Utilities**

- Goals and Policies
- Existing Conditions

- **Essential Public
Facilities**

- Goals and Policies
- Existing Conditions

- **Capital Facilities**

- Goals and Policies
- Existing Conditions
- 6 Year CIP



WHITE BLUFFS
CONSULTING



Potential New Comprehensive Plan Elements/Sections

■ Environment

- Critical Areas (including updated CA regulations)
- Voluntary Stewardship Program
- Shoreline Master Program

■ Natural Resources

- Water Resources – addressing exempt wells with WRIA-specific strategies
- Resource Lands

■ Land Use

- Update population forecast/designations

■ Economic Development

- Work with EDC on updates
- Add in strategies

■ Transportation

- WSDOT Coordination/State Facilities Addressed

■ Capital Facilities

- 6 Year CIP for all public entities: PUD, schools, etc.



WHITE BLUFFS
CONSULTING



Expected Population Growth

- 2018 – 13,540
 - Urban areas – 3,230
 - Unincorporated areas – 10,310
- Projected 2040 – 14,634
 - Increase of 1,094
 - Urban areas increase – TBD (e.g., 262 = 24% per current split)
 - Unincorporated increase – TBD (e.g., 832 = 76% per current split)
- Other –
 - Aging population demographic and growth impacts from Spokane



WHITE BLUFFS
CONSULTING



Plan Update –Potential Priorities

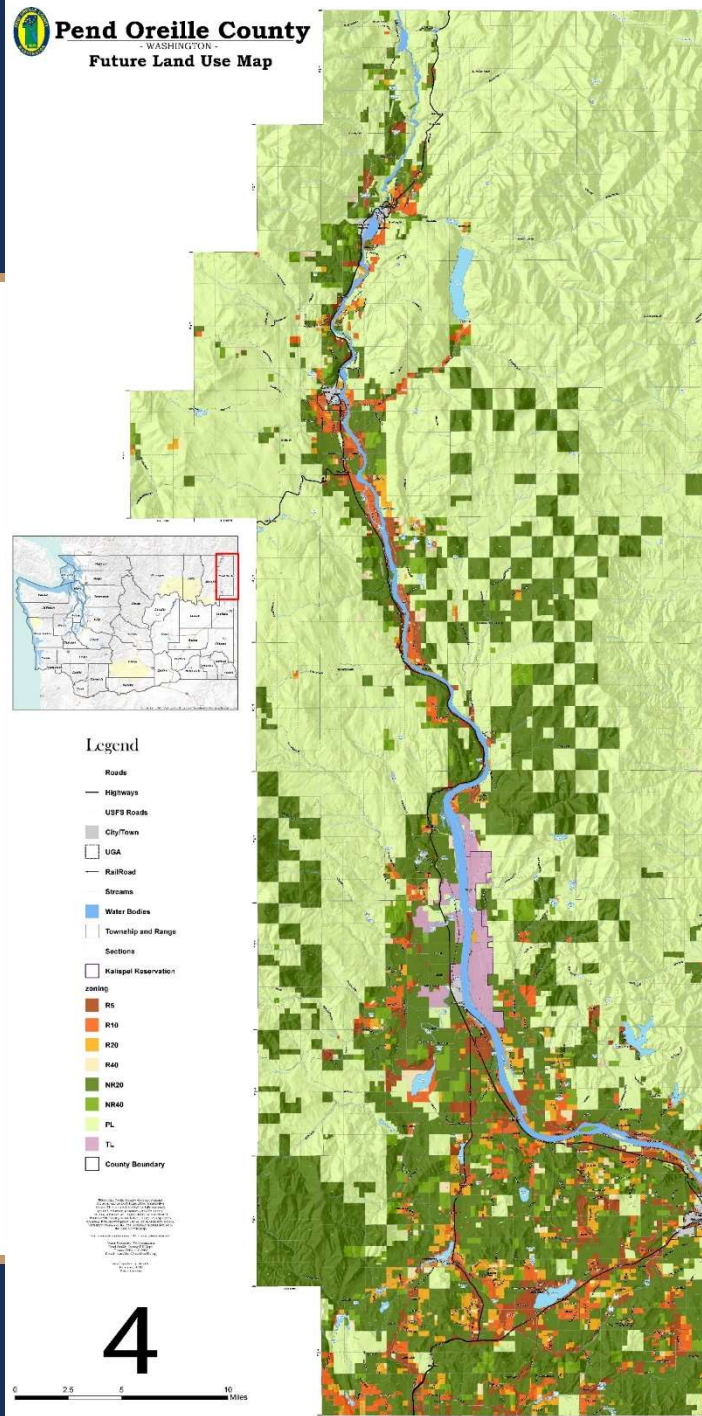
- Provide continued opportunities for public input
- Address growth while preserving environmental quality, public health and safety
- Maintaining jobs/resource industries
- Provide opportunity for new industries/job creation
- Development regs and updated plan consistent
- Others? - What do PC members feel are the most important items to address with update?



WHITE BLUFFS
CONSULTING



Future Land Use



WHITE BLUFFS
CONSULTING



Next Steps

- Public participation plan - May
- Population projection/allocation among County, city and towns - June
- Review and update County-wide Planning Policies – June
- Visioning meetings: June 10 - 12
- Planning Commission workshops –
 - Discuss schedule (6 meetings planned for in budget including today's kickoff meeting and adoption hearing)
 - Discuss plan sections in batches (4 workshops)



WHITE BLUFFS
CONSULTING



Additional Questions/Comments?



WHITE BLUFFS
CONSULTING