

**Official Sample Ballot
 Presidential Primary Election
 Pend Oreille County, State of Washington
 March 12, 2024**

SAMPLE BALLOT

**Important Presidential Primary
 Voting Instructions**
*(Refer to insert for detailed instructions
 on how to vote.)*

For your vote to count you **must**:

- Check **one** party box on the return envelope.
- Vote for **one** candidate from the party you marked on your return envelope.
- Sign your return envelope.

Voting in BOTH Democratic and Republican contests will void your ballot.



Democratic Party

Republican Party

**President of the United States
 Democratic Party**

**President of the United States
 Republican Party**

If you mark Democratic Party on your envelope, vote for one below.

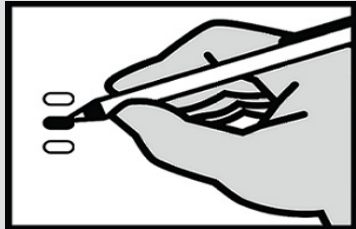
If you mark Republican Party on your envelope, vote for one below.

- Joseph R Biden Jr**
(Prefers Democratic Party)
- Dean Phillips**
(Prefers Democratic Party)
- Marianne Williamson**
(Prefers Democratic Party)
- Uncommitted Delegates**
(Prefers Democratic Party)
- Write-In

- Chris Christie**
(Prefers Republican Party)
- Ron DeSantis**
(Prefers Republican Party)
- Nikki Haley**
(Prefers Republican Party)
- Vivek Ramaswamy**
(Prefers Republican Party)
- Donald J. Trump**
(Prefers Republican Party)
- Write-In

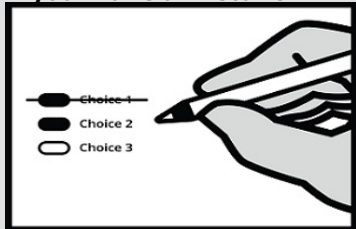
Instructions

How to Vote



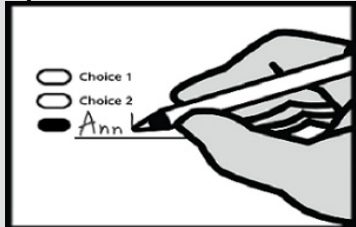
Use a dark blue or black ink pen to completely fill in the oval to the left of your choice. Vote for one in each race. If you vote for more than one, no votes will be counted for that race.

If you make a mistake



Draw a line through the entire measure response or candidate's name. Then you may make another choice.

Optional write-in



To vote for a candidate not listed for that race, fill in the oval to the left of the line and print the name of the candidate.

Who donates to campaigns?

For a list of the people and organizations that donate to Presidential candidates' campaigns, visit
FEC (Federal Election Commission)
www.fec.gov Toll Free (800) 424-9530

Sample