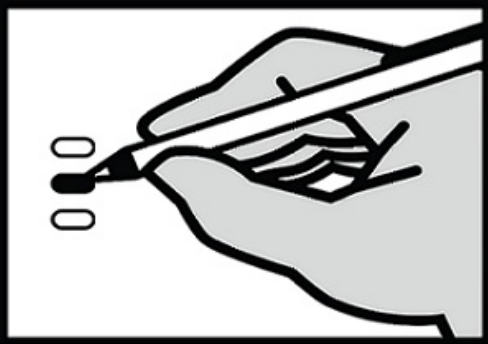


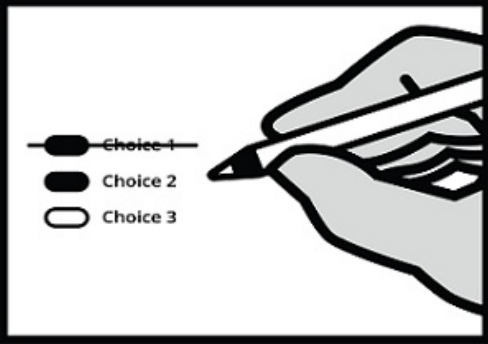
Instructions

How to Vote



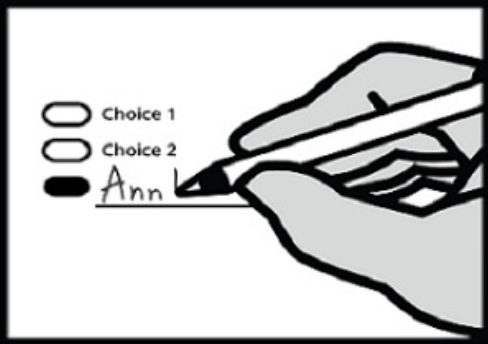
Use a dark blue or black ink pen to completely fill in the oval to the left of your choice. Vote for one in each race. If you vote for more than one, no votes will be counted for that race.

If you make a mistake



Draw a line through the entire measure response or candidate's name. Then you may make another choice.

Optional write-in



To vote for a candidate not listed for that race, fill in the oval to the left of the line and print the name of the candidate.



Who donates to campaigns?
View contributors for candidates and measures

Public Disclosure Commission
www.pdc.wa.gov
Toll Free (877) 601-2828

Start Voting Here

READ: If a primary election was held for an office, the two candidates who received the most votes in the Primary advance to the General Election.

Each candidate for partisan office may state a political party that he or she prefers. A candidate's preference does not imply that the candidate is nominated or endorsed by the party, or that the party approves of or associates with that candidate.

State Measures - Advisory Vote

Advisory Vote No. 39 - Engrossed Substitute Senate Bill 5974

The legislature increased, without a vote of the people, the tax on aircraft fuel from 11 cents to 18 cents per gallon, costing \$14 million in its first ten years, for government spending.

This tax increase should be:

- ☐ Repealed
- ☐ Maintained

Advisory Vote No. 40 - Engrossed Substitute House Bill 2076

The legislature imposed, without a vote of the people, premiums on "transportation network companies" to provide workers compensation to their drivers, costing an indeterminate amount in its first ten years, for government spending.

This tax increase should be:

- ☐ Repealed
- ☐ Maintained

READ: Each candidate for partisan office may state a political party that he or she prefers. A candidate's preference does not imply that the candidate is nominated or endorsed by the party, or that the party approves of or associates with that candidate.

Federal - Partisan Offices

U.S. Senator
Regular 6 year term
Vote for 1

- ☐ **Patty Murray**
(Prefers Democratic Party)
- ☐ **Tiffany Smiley**
(Prefers Republican Party)
- ☐

U.S. Representative
Congressional District No. 5
Regular 2 year term
Vote for 1

- ☐ **Cathy McMorris Rodgers**
(Prefers Republican Party)
- ☐ **Natasha Hill**
(Prefers Democratic Party)
- ☐

State - Partisan Offices

Secretary of State
Unexpired 2 year term
Vote for 1

- ☐ **Steve Hobbs**
(Prefers Democratic Party)
- ☐ **Julie Anderson**
(Prefers Nonpartisan Party)
- ☐

Legislative - Partisan Offices

State Senator - District No. 7
Regular 4 year term
Vote for 1

- ☐ **Shelly Short**
(Prefers Republican Party)
- ☐

State Senator - District No. 7, Pos. 1
Regular 2 year term
Vote for 1

- ☐ **Jacquelin Maycumber**
(Prefers Republican Party)
- ☐ **Lonny Ray Williams**
(Prefers Republican Party)
- ☐

State Senator - District No. 7, Pos. 2
Regular 2 year term
Vote for 1

- ☐ **Joel Kretz**
(Prefers Republican Party)
- ☐

TURN OVER AND CONTINUE
VOTING

County - Partisan Offices

COUNTY ASSESSOR
Regular 4 year term
Vote for 1

☐ James W McCroskey
(Prefers Republican Party)

☐

COUNTY AUDITOR
Regular 4 year term
Vote for 1

☐ Marianne Nichols
(Prefers Republican Party)

☐ Tamara Newman
(Prefers Republican Party)

☐

COUNTY CLERK
Regular 4 year term
Vote for 1

☐ Tammie A. Ownbey
(Prefers Republican Party)

☐

COUNTY COMMISSIONER NO. 2
Short & Full 4 year term
Vote for 1

☐ Robert Rosencrantz
(Prefers Republican Party)

☐ Becky Walrath
(Prefers GOP Party)

☐

COUNTY PROSECUTOR
Regular 4 year term
Vote for 1

☐ Dolly Hunt
(Prefers Republican Party)

☐

COUNTY SHERIFF
Regular 4 year term
Vote for 1

☐ Glenn Blakeslee
(Prefers Republican Party)

☐

COUNTY TREASURER
Regular 4 year term
Vote for 1

☐ Nicole Dice
(Prefers Republican Party)

☐

Public Utility District - Nonpartisan Office

PUBLIC UTILITY COMMISSIONER NO. 3
Regular 6 year term
Vote for 1

☐ Dave Rick

☐ John Cameron

☐

Judicial - Nonpartisan Office

State Supreme Court Justice
Position No. 1
Regular 6 year term
Vote for 1

☐ Mary I. Yu

☐

State Supreme Court Justice
Position No. 5
Regular 6 year term
Vote for 1

☐ Barbara Madsen

☐

State Supreme Court Justice
Position No. 6
Regular 6 year term
Vote for 1

☐ G. Helen Whitener

☐

DISTRICT COURT JUDGE
Regular 4 year term
Vote for 1

☐ Robin R. McCroskey

☐

Loon Lake School District No. 183

Special Election - Proposition No. 1

CAPITAL LEVY FOR SECURITY AND TECHNOLOGY IMPROVEMENTS

The Board of Directors of Loon Lake School District No. 183 adopted Resolution No. 204, concerning a proposition for a levy to make capital improvements. This proposition would authorize the District to levy the following excess taxes, on all taxable property within the District, to make security and technology improvements (including installing additional security cameras; acquiring student and staff computers and other technology equipment, hardware and software):

Collection Year	Estimated Levy Rate/\$1,000 Assessed Value	Levy Amount
2023	\$0.20	\$100,000
2024	\$0.20	\$100,000
2025	\$0.18	\$100,000
2026	\$0.17	\$100,000
2027	\$0.17	\$100,000
2028	\$0.17	\$100,000

all as provided in Resolution No. 204. Should this proposition be approved?

☐ Yes, Levy

☐ No, Levy

Fire Protection District No. 8

Special Election - Proposition No. 1

Pend Oreille County Fire Protection District No. 8 Authorizing the Merger of the District into South Pend Oreille County Fire & Rescue.

The proposition will authorize the merger of Pend Oreille County Fire Protection District No. 8 into South Pend Oreille County Fire & Rescue, effective January 1, 2023.

Should this Proposition be enacted into law?

☐ Yes

☐ No

Fire Protection District No. 5

Special Election - Proposition No. 1

Permanent Lid Lift Levy to Fund Maintenance and Operations

The Board of Commissioners of Pend Oreille County Fire District 5 adopted Resolution 07.28.2022, concerning an increase to its regular property tax levy. Proposition 1 would provide continued funding for normal operations and maintenance of the district. It authorizes a permanent increase to the district's regular property levy, from \$0.39 to \$0.50 per thousand dollars of assessed value, for collection starting in 2023. The 2023 levy amount will be used for the purpose of computing the limitations for subsequent levies under chapter 84.55 RCW. Qualifying low-income seniors, disabled veterans and other people with disabilities will be exempt from the levy increase under RCW 84.36.381.

Should this proposition be:

☐ Approved

☐ Rejected

Sacheen Lake Water & Sewer District

Special Election Proposition No. 1

Sacheen Lake Water & Sewer District One Year Excess Levy for Maintenance & Operation

Shall the following taxes, in excess of regular, non-voted property tax levies, for operation and maintenance purposes be levied for Sacheen Lake Water and Sewer District's General Fund upon all taxable property within the District;

A tax of approximately \$.75 per thousand dollars of assessed valuation (based on true and fair value) to provide \$ 75,222, said levy to be made in 2022 for collection in 2023.

☐ Yes, Levy

☐ No, Levy