


Official Sample Ballot
Pend Oreille County, Washington
Primary Election
August 3, 2021

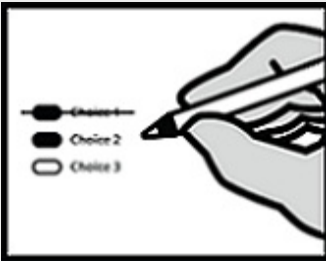
Instructions

How to vote



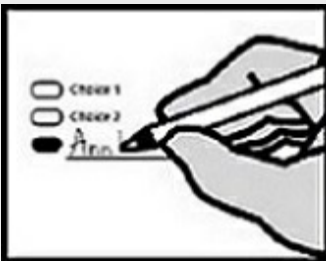
Vote for one in each race. If you vote for more than one, no votes will be counted for that race.
Use a dark blue or black ink pen to completely fill in the oval  to the left of your choice.


If you make a mistake



Draw a line through the entire choice.
Then you may make another choice.

Optional Write-in



To vote for a candidate not listed for that race, fill in the oval  to the left of "Write-in" and print the name on the line.

Who donates to campaigns?

View contributors for candidates and measures at:

Public Disclosure Commission

www.pdc.wa.gov

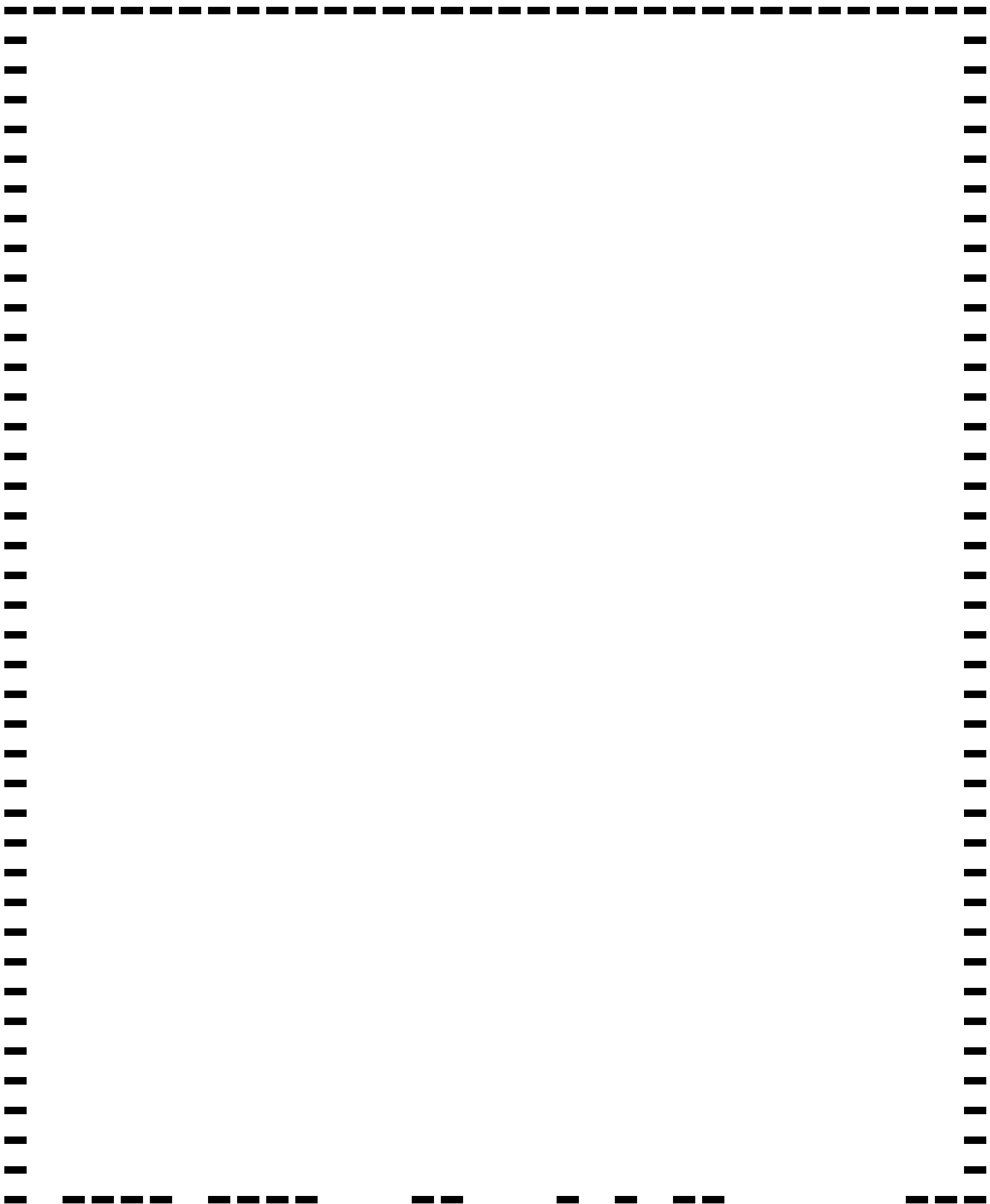
Toll free (877)601-2828

Read: Each candidate for partisan office may state a political party that he or she prefers. A candidate's preference does not imply that the candidate is nominated or endorsed by the party, or that the party approves or associates with that candidate.

Town of Ione
Nonpartisan Office

MAYOR
Vote for 1
Regular 4 year term

- ☐ **Charles (Charlie) Spears**
- ☐ **Eva Marie Warren**
- ☐ **Leisa Glasgow**
- ☐ _____



Sample Precinct [10] (CS 1)