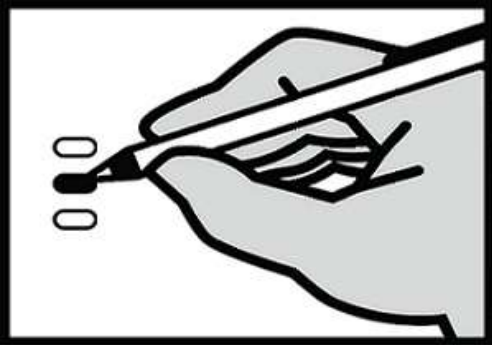


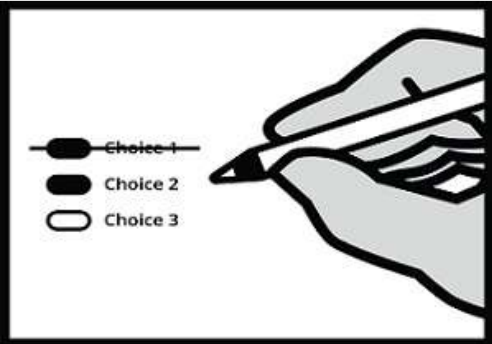
Instructions

How to Vote



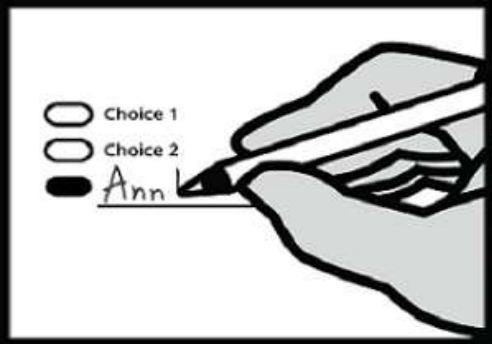
Use a dark blue or black ink pen to completely fill in the oval to the left of your choice. Vote for one in each race. If you vote for more than one, no votes will be counted for that race.

If you make a mistake



Draw a line through the entire measure response or candidate's name. Then you may make another choice.

Optional write-in



To vote for a candidate not listed for that race, fill in the oval to the left of the line and print the name of the candidate.



Who donates to campaigns?
View contributors for candidates and measures

Public Disclosure Commission
www.pdc.wa.gov
Toll Free (877) 601-2828

Start Voting Here

READ: Each candidate for partisan office may state a political party that he or she prefers. A candidate's preference does not imply that the candidate is nominated or endorsed by the party, or that the party approves of or associates with that candidate.

Federal - Partisan Office

U.S. Representative Congressional District 5
2 Year Term
Vote for One

- ☐ Chris Armitage
(Prefers Democratic Party)
- ☐ Brendan O'Regan
(Prefers Independent Party)
- ☐ Stephen T. Major
(Prefers Republican Party)
- ☐ Dave Wilson
(Prefers Democratic Party)
- ☐ Cathy McMorris Rodgers
(Prefers Republican Party)
- ☐

State - Partisan Offices

Governor
4 Year Term
Vote for One

- ☐ Alex Tsimerman
(Prefers StandUpAmerica Party)
- ☐ Phil Fortunato
(Prefers Republican Party)
- ☐ Ryan Ryals
(Prefers Unaffiliated Party)
- ☐ Leon Aaron Lawson
(Prefers Trump Republican Party)
- ☐ Henry Clay Dennison
(Prefers Socialist Workers Party)
- ☐ Tim Eyman
(Prefers Republican Party)
- ☐ Liz Hallock
(Prefers Green Party)
- ☐ Goodspaceguy
(Prefers Trump Republican Party)
- ☐ Omari Tahir Garrett
(Prefers Democrat Party)
- ☐ Don L. Rivers
(Prefers Democratic Party)
- ☐ Martin L. 'Iceman' Wheeler
(Prefers Republican Party)
- ☐ Raul Garcia
(Prefers Republican Party)
- ☐ Tylor Grow
(Prefers Republican Party)
- ☐ Winston Wilkes
(Prefers Propertarianist Party)
- ☐ Brian R. Weed
(States No Party Preference)
- ☐ Thor Amundson
(Prefers Independent Party)
- ☐ Gene Hart
(Prefers Democratic Party)
- ☐ William (Bill) Miller
(Prefers American Patriot Party)
- ☐ Matthew Murray
(Prefers Republican Party)
- ☐ Dylan B. Nails
(Prefers Independent Party)
- ☐ Cameron M. Vessey
(States No Party Preference)
- ☐ David W. Blomstrom
(Prefers Fifth Republic Party)
- ☐ Anton Sakharov
(Prefers Trump Republican Party)
- ☐ Craig Campbell
(States No Party Preference)
- ☐ Nate Herzog
(Prefers Pre2016 Republican Party)
- ☐ Cregan M. Newhouse
(States No Party Preference)
- ☐ Ian Gonzales
(Prefers Republican Party)
- ☐ Cairo D'Almeida
(Prefers Democratic Party)
- ☐ Elaina J. Gonzalez
(Prefers Independent Party)
- ☐ Jay Inslee
(Prefers Democratic Party)
- ☐ Joshua Freed
(Prefers Republican Party)
- ☐ David Voltz
(Prefers Cascadia Labour Party)
- ☐ Joshua Wolf
(Prefers New-Liberty Party)
- ☐ Loren Culp
(Prefers Republican Party)
- ☐ Richard L. Carpenter
(Prefers Republican Party)
- ☐ Bill Hirt
(Prefers Republican Party)
- ☐

TURN OVER AND CONTINUE
VOTING

State - Partisan Offices

Lieutenant Governor
4 Year Term
Vote for One

- ☐ Joseph Brumbles
(Prefers Republican Party)
- ☐ Jared Frerichs
(Prefers Libertarian Party)
- ☐ Ann Davison Sattler
(Prefers Republican Party)
- ☐ James R. Rafferty
(Prefers Democratic Party)
- ☐ Marko Liias
(Prefers Democratic Party)
- ☐ Matt Seymour
(Prefers Libertarian Party)
- ☐ Michelle Jasmer
(Prefers Democratic Party)
- ☐ Bill Penor
(Prefers Republican Party)
- ☐ Richard (Dick) Muri
(Prefers Republican Party)
- ☐ Denny Heck
(Prefers Democratic Party)
- ☐ Marty McClendon
(Prefers Republican Party)
- ☐

Secretary of State
4 Year Term
Vote for One

- ☐ Ed Minger
(Prefers Independent Party)
- ☐ Gentry Lange
(Prefers Progressive Party)
- ☐ Kim Wyman
(Prefers Republican Party)
- ☐ Gael Tarleton
(Prefers Democratic Party)
- ☐

State Treasurer
4 Year Term
Vote for One

- ☐ Duane A. Davidson
(Prefers Republican Party)
- ☐ Mike Pellicciotti
(Prefers Democratic Party)
- ☐

State Auditor
4 Year Term
Vote for One

- ☐ Joshua Casey
(Prefers Democratic Party)
- ☐ Chris Leyba
(Prefers Republican Party)
- ☐ Pat (Patrice) McCarthy
(Prefers Democratic Party)
- ☐

Attorney General
4 Year Term
Vote for One

- ☐ Matt Larkin
(Prefers Republican Party)
- ☐ Mike Vaska
(Prefers GOP Party)
- ☐ Brett Rogers
(Prefers Republican Party)
- ☐ Bob Ferguson
(Prefers Democratic Party)
- ☐

State - Partisan Offices

Commissioner of Public Lands
4 Year Term
Vote for One

- ☐ Cameron Whitney
(Prefers Republican Party)
- ☐ Steve Sharon
(Prefers Republican Party)
- ☐ Hilary Franz
(Prefers Democratic Party)
- ☐ Kelsey Reyes
(Prefers Libertarian Party)
- ☐ Maryam Abasbarzy
(Prefers Republican Party)
- ☐ Sue Kuehl Pederson
(Prefers Republican Party)
- ☐ Frank Wallbrow
(Prefers Democratic Party)
- ☐

State - Nonpartisan Office

Superintendent of Public Instruction
4 Year Term
Vote for One

- ☐ Ron Higgins
- ☐ Maia Espinoza
- ☐ Stan Lippmann
- ☐ David Spring
- ☐ Dennis Wick
- ☐ Chris Reykdal
- ☐

State - Partisan Office

Insurance Commissioner
4 Year Term
Vote for One

- ☐ Anthony Welti
(Prefers Libertarian Party)
- ☐ Chirayu Avinash Patel
(Prefers Republican Party)
- ☐ Mike Kreidler
(Prefers Democratic Party)
- ☐

Legislative - Partisan Offices

State Representative District 7
Position 1
2 Year Term
Vote for One

- ☐ Georgia D. Davenport
(Prefers Democratic Party)
- ☐ Jacquelin Maycumber
(Prefers Republican Party)
- ☐

State Representative District 7
Position 2
2 Year Term
Vote for One

- ☐ Joel Kretz
(Prefers Republican Party)
- ☐ JJ Wandler
(Prefers Independent Party)
- ☐

County - Partisan Offices

County Commissioner District 1
4 Year Term
Vote for One

- ☐ Donna Lands
(Prefers Republican Party)
- ☐ Devin Beach
(Prefers Republican Party)
- ☐ Phyllis Jean Kardos
(Prefers Democrat Party)
- ☐ John Gentle
(Prefers Republican Party)
- ☐

County Commissioner District 3
4 Year Term
Vote for One

- ☐ Brian Smiley
(Prefers Republican Party)
- ☐ Paul F Mahre
(Prefers Independent Party)
- ☐ Christina Baumgardner
(Prefers Republican Party)
- ☐ Rj Hampton
(Prefers Republican Party)
- ☐

Election of Politial Party
Precinct Committee Officer

For this office only: In order to vote for precinct committee officer, a partisan office, you must affirm that you are a Democrat or Republican and may vote only for one candidate from the party you select. Your vote for a candidate affirms your affiliation with the same party as the candidate. This preference is private and will not be matched to your name or shared.

Sacheen Precinct Committee Officer
Democratic
2 Year Term
Vote for One

- ☐ Diane Brunotte - Dem
I affirm I am a Democrat.
- ☐ Dustin Jolly - Dem
I affirm I am a Democrat.
- ☐

Local elections will appear only in the areas eligible to vote on them.

County Commissioners will appear only in the areas eligible to vote on them.

Sample Ballot compiled by: Marianne Nichols Pend Oreille County Auditor